

*Radiological Society of Finland
Breast Radiologists of Finland*
2011

Detection *and* Diagnosis of Early Breast
Cancer Using *the* Multimodality
Approach

- * Hands-on training in screening
- * Diagnosis *and* Differential Diagnosis using
the Multimodality Approach

HELSINKI, Finland
Sept 26-29, 2011

LÁSZLÓ TABÁR, M.D., F.A.C.R (Hon) Course Director
*Professor of Radiology
and*

PETER B. DEAN, M.D.

Designed for:

Radiologists and
Radiology Technologists

This course provides extensive knowledge about how to find breast cancer in its early stages, about diagnostic breast imaging, differential diagnosis of breast diseases using the multimodality approach



3D image of a milk duct



2011 *HELSINKI*
BREAST TEACHING COURSE
Multimodality Detection and
Diagnosis of Breast Diseases

László Tabár, M.D., F.A.C.R.(Hon)
Professor of Radiology, Course Director
Peter B. Dean, M.D., Professor of Radiology

FACULTY



László Tabár, M.D., F.A.C.R. (Hon).
Course Director
*Professor of Radiology, University of Uppsala
School of Medicine, Sweden
Director, Department of Mammography, Falun
Central Hospital, Falun, Sweden*



Peter B. Dean, M.D.
*Professor of Radiology,
Department of Diagnostic Radiology
University of Turku
Turku, Finland*

2011 *HELSINKI*
BREAST TEACHING COURSE
Multimodality Detection and
Diagnosis of Breast Diseases

László Tabár, M.D., F.A.C.R.(Hon)
Professor of Radiology, Course Director
Peter B. Dean, M.D., Professor of Radiology

This educational activity is accredited by the University of Turku for 26 hours of continuing medical education for radiologists. Each physician should only claim those credit hours which he or she actually spent participating in the educational activity.



CREDITS

We would like to thank the sponsors for their support of this teaching seminar. A list of the vendors will be distributed to all registrants at the beginning of the course.



Images from the non-profit Tabar Foundation for Research and Education for Breast Cancer

www.tabarfoundation.org

1st DAY Lectures between 9:00 AM and 12:00 for all attendees

9:00 INTRODUCTION – *ARONEN H, RISSANEN T AND BERG M*

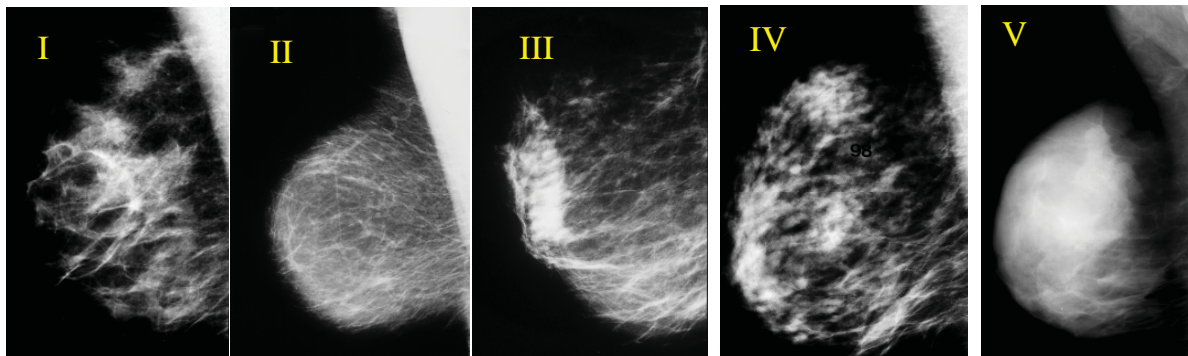
9:05 DIDACTIC LECTURES COVERING: HOW TO READ A MAMMOGRAM? THE BASIS FOR EFFICIENT INTERPRETATION OF THE MAMMOGRAPHIC IMAGE - [Tabar L](#)

- Correlative 3-dimensional, subgross anatomy and mammography of the normal breast

Break at
10:30 AM

MAMMOGRAPHIC PARENCHYMAL PATTERNS

- Practical implication, problems and solutions. Mammographic patterns and the risk of developing breast cancer. Understanding the mammograms of dense breasts.



HOW TO FIND THE INVASIVE BREAST CANCER WHEN IT IS STILL SMALL . SCREENING COMBINED WITH AN ANALYTICAL APPROACH FOR THE DIFFERENTIAL DIAGNOSIS OF STELLATE/SPICULATED LESIONS - [Tabar L](#)

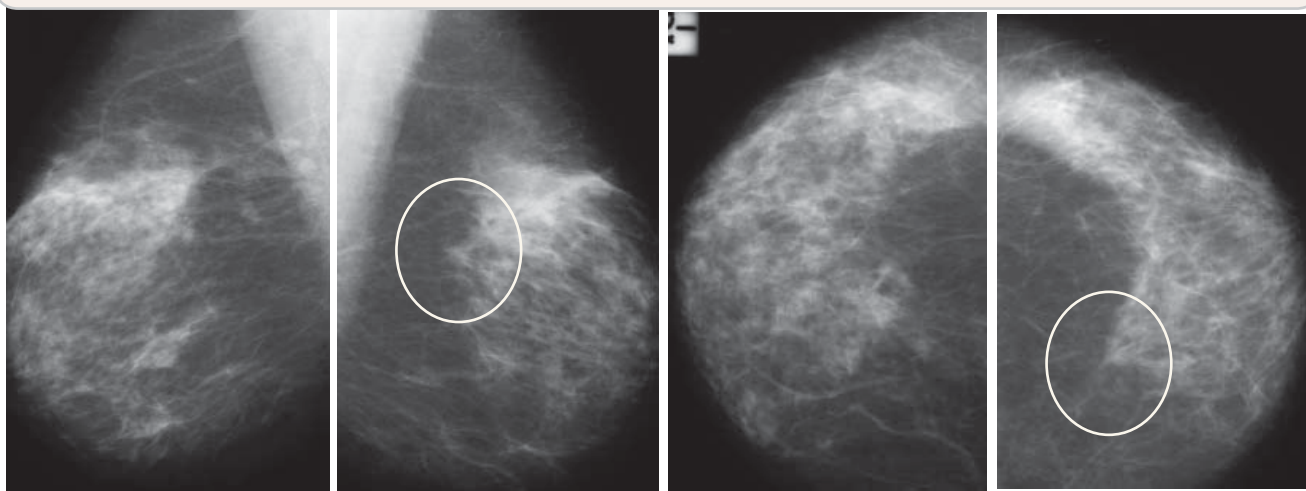
- A systematic method for viewing mammograms.
- Areas on the mammogram where most breast cancers will be found
- Viewing dense breasts
- Viewing relatively easy-to-read breasts

12:00 Lunch

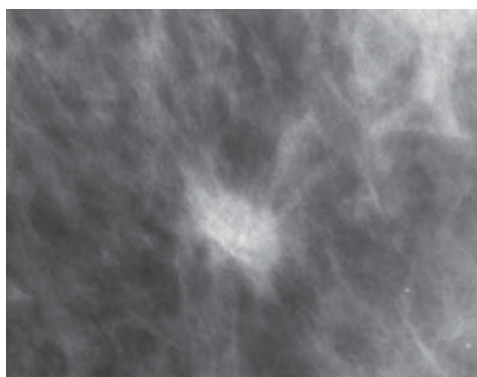
1st DAY Hands-on screening and didactic lecture series

1:00 - 2:15 **GROUP 1** HANDS ON SCREENING, SESSION 1 - Dean, PB

1:00 - 2:15 **GROUP 2:** DEMONSTRATION AND DISCUSSION OF "COMPLEX CASES". Faculty-audience interaction - Tabar L



Break 2:15-2:30 PM



Hands-on training in screening



2:30 - 3:45 **GROUP 2** HANDS ON SCREENING, SESSION 1 - Dean, PB

2:30 - 3:45 **GROUP 1:** DEMONSTRATION AND DISCUSSION OF "COMPLEX CASES". Faculty-audience interaction - Tabar L

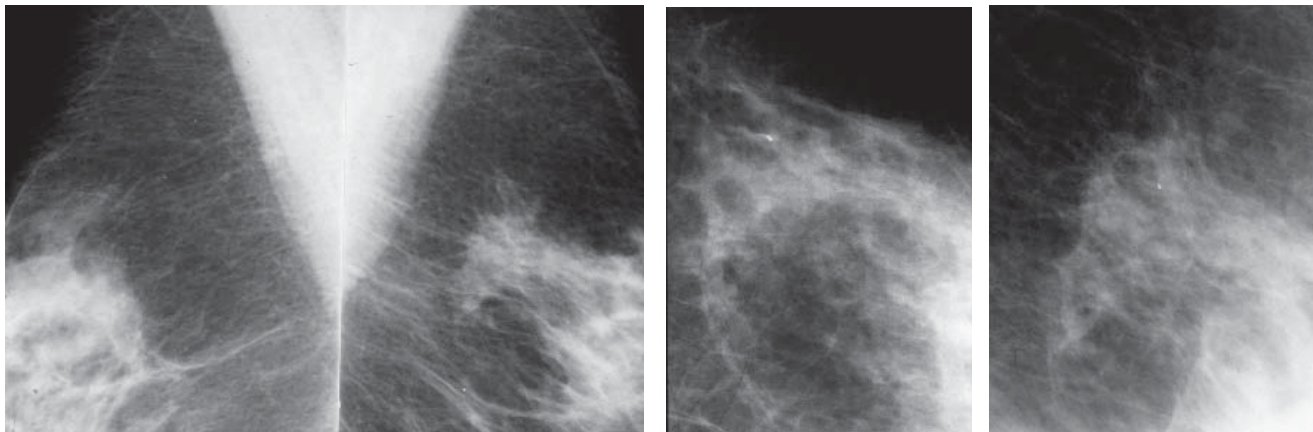
4:00 - 5:30 **GROUPS 1 & 2:** DISCUSSION OF THE SCREENING CASES OF *SESSION 1* AND LECTURES OF THE AFTERNOON SESSION

5:30 PM End of Day 1

2nd DAY Hands-on screening and didactic lecture series 8:30 - 12:00

8:00 - 9:15 **GROUP 1** HANDS ON SCREENING, SESSION 2 - Dean, PB

8:00 - 9:15 **GROUP 2:** DIDACTIC LECTURE SERIES COVERING THE FOLLOWING TOPICS:
THE NEW ERA IN THE DIAGNOSIS AND TREATMENT OF BREAST CANCER. *The issue of uni-
multifocality. Clinical implications - Tabar L*



Break
9:15 - 9:30 AM

9:30 - 10:45 **GROUP 2** HANDS ON SCREENING, SESSION 2 - Dean, PB

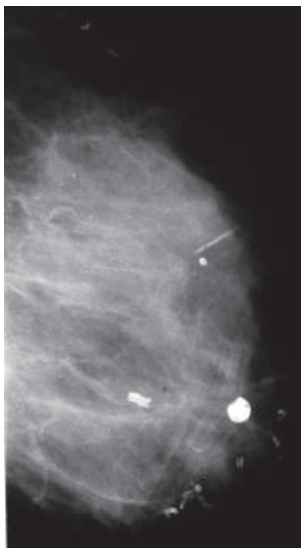
9:30 - 10:45 **GROUP 1:** DIDACTIC LECTURE SERIES COVERING THE FOLLOWING TOPICS:
THE NEW ERA IN THE DIAGNOSIS AND TREATMENT OF BREAST CANCER. *The issue of uni-
multifocality. Clinical implications - Tabar L*

11:00 - 12:00 **GROUPS 1& 2:** DISCUSSION OF THE SCREENING CASES OF SESSION 2 AND
LECTURES OF THE MORNING SESSION

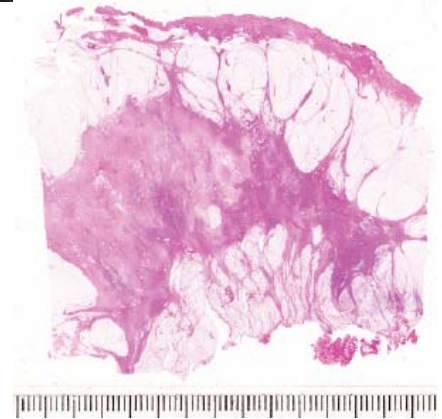
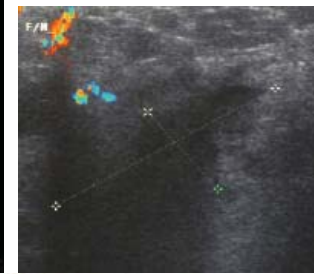
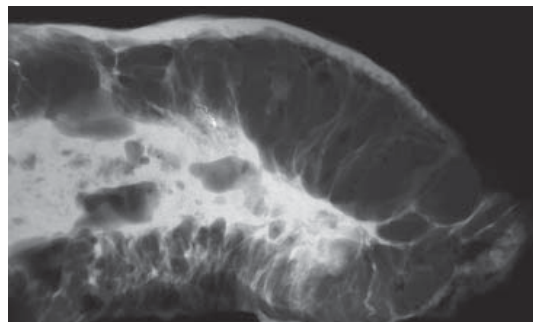
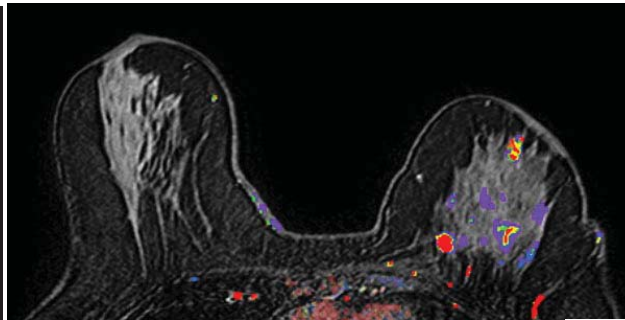
Lunch 12:00 PM - 1:30 PM

2nd DAY Hands-on screening and didactic lecture series 1:00 - 5:00 PM

1:30 - 2:45 **GROUPS 1 & 2:** DIDACTIC LECTURE SERIES COVERING THE FOLLOWING TOPICS:
MULTIMODALITY WORKUP OF ASYMMETRIC DENSITIES ON THE MAMMOGRAM - Tabar L
IMAGING WOMEN WITH DENSE BREAST TISSUE: Description of the problem and a promising
solution - Tabar L



Multimodality workup
of a huge invasive
lobular carcinoma



Break 2:45-3:00 PM

3:00 - 4:15 **GROUPS 1 & 2:** DIDACTIC LECTURE SERIES COVERING THE FOLLOWING TOPICS:
MULTIMODALITY WORKUP OF ASYMMETRIC DENSITIES ON THE MAMMOGRAM - Tabar L
IMAGING WOMEN WITH DENSE BREAST TISSUE: Description of the problem and a promising
solution - Tabar L

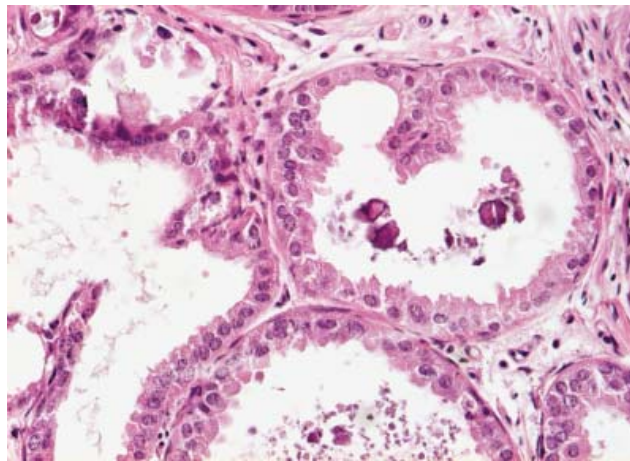
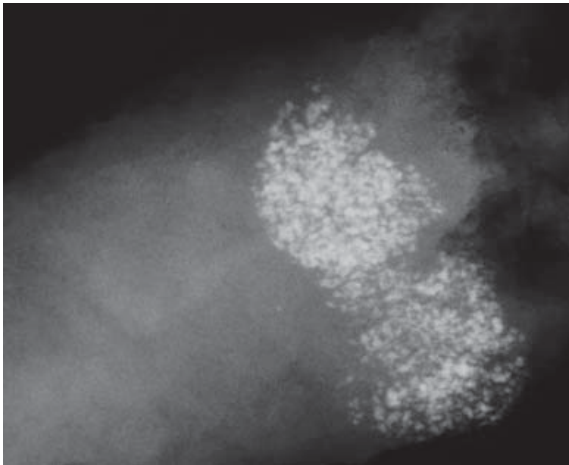
Discussion

4:30 PM End of Day 2

3rd DAY Hands-on screening and didactic lecture series 8:30 - 12:00

8:00 - 9:15 **GROUP 1** HANDS ON SCREENING, SESSION 3 - [Dean, PB](#)

8:00 - 9:15 **GROUP 2:** DIDACTIC LECTURE SERIES COVERING THE FOLLOWING TOPICS:
SCHEME FOR THE ANALYSIS OF MAMMOGRAPHIC CALCIFICATIONS PART I - [Tabar L](#)



Break
9:15 - 9:30 AM

Mammographic-histologic correlation of powdery/cotton ball-like calcifications

9:30 - 10:45 **GROUP 2** HANDS ON SCREENING, SESSION 3 - [Dean, PB](#)

9:30 - 10:45 **GROUP 1:** DIDACTIC LECTURE SERIES COVERING THE FOLLOWING TOPICS:
SCHEME FOR THE ANALYSIS OF MAMMOGRAPHIC CALCIFICATIONS PART I - [Tabar L](#)

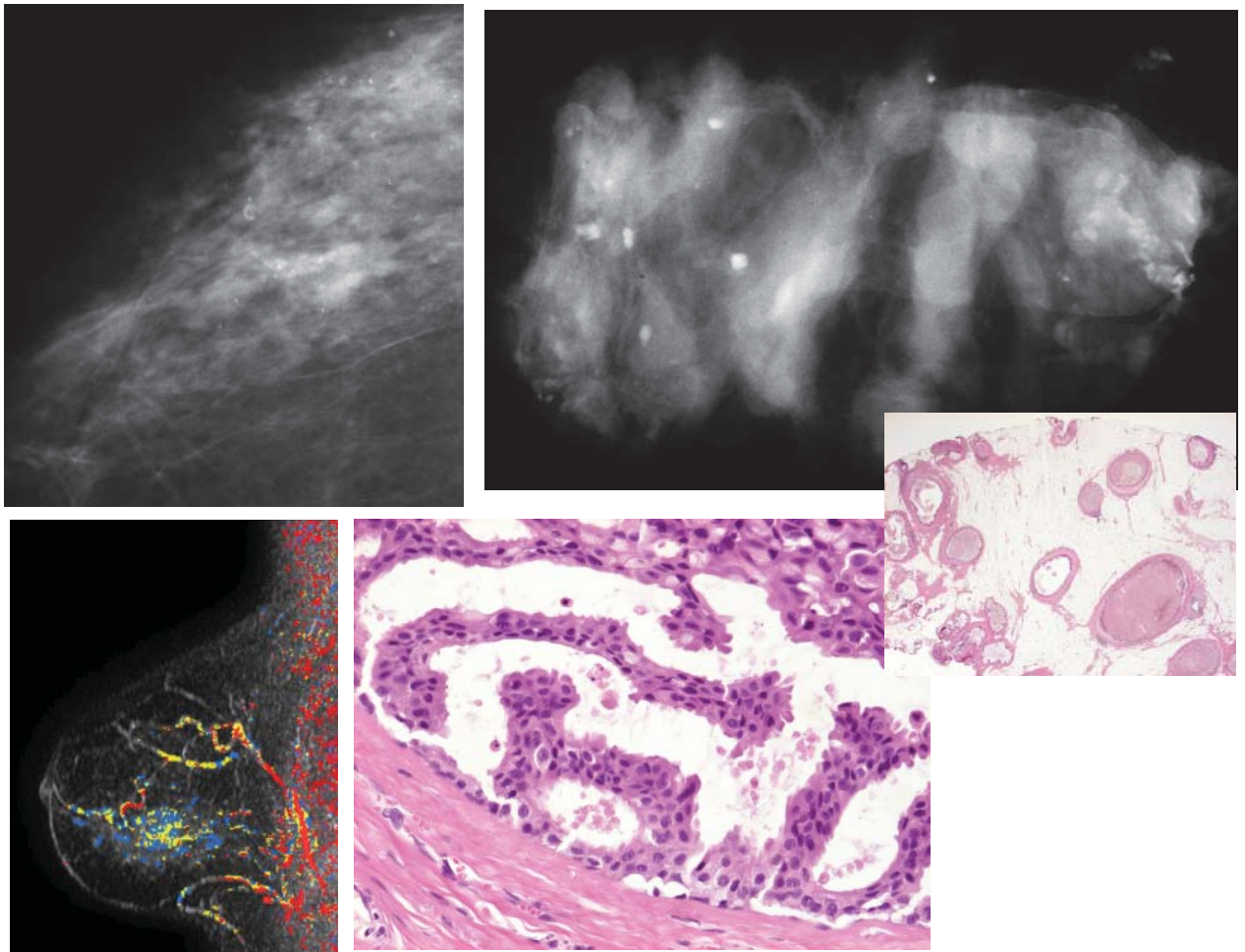
11:00 - 12:00 **GROUPS 1 & 2:** DISCUSSION OF THE SCREENING CASES OF *SESSION 3* AND
LECTURES OF THE MORNING SESSION

Lunch 12:00 PM - 1:30 PM

3rd DAY Hands-on screening and didactic lecture series 1:00 - 5:00 PM

1:30 - 2:45 **GROUPS 1& 2:** DIDACTIC LECTURE SERIES COVERING THE FOLLOWING TOPICS:

SCHEME FOR THE ANALYSIS OF MAMMOGRAPHIC CALCIFICATIONS PART II - [Tabar L](#)



Break 2:45-3:00 PM

Imaging-histologic correlation of skipping stone-like calcifications

3:00 - 4:15 **GROUPS 1&2:** DIDACTIC LECTURE SERIES COVERING THE FOLLOWING TOPICS:

SCHEME FOR THE ANALYSIS OF MAMMOGRAPHIC CALCIFICATIONS PART III - [Tabar L](#)

Discussion

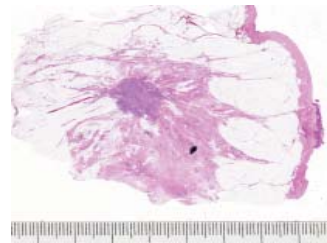
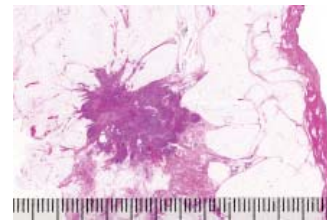
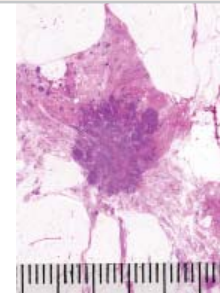
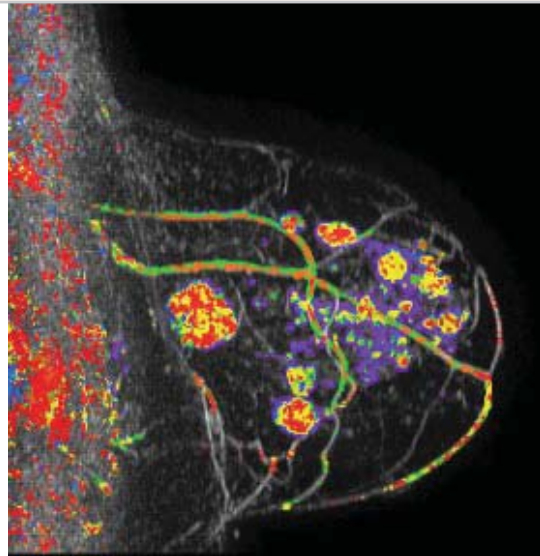
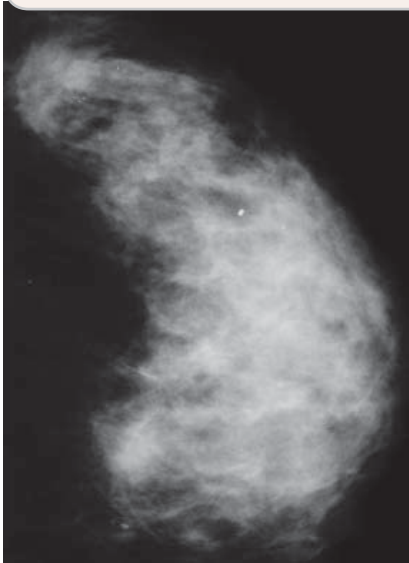
4:30 PM End of Day 3

4th DAY Hands-on screening and didactic lecture series 8:30 - 12:00

8:00 - 9:15 **GROUP 1** HANDS ON SCREENING, SESSION 4 - Dean, PB

8:00 - 9:15 **GROUP 2:** DIDACTIC LECTURE SERIES COVERING THE FOLLOWING TOPICS:

DISCUSSION OF COMPLEX CASES - Faculty-audience interaction



Break 9:15 - 9:30 AM

9:30 - 10:45 **GROUP 2** HANDS ON SCREENING, SESSION 4 -
Dean, PB

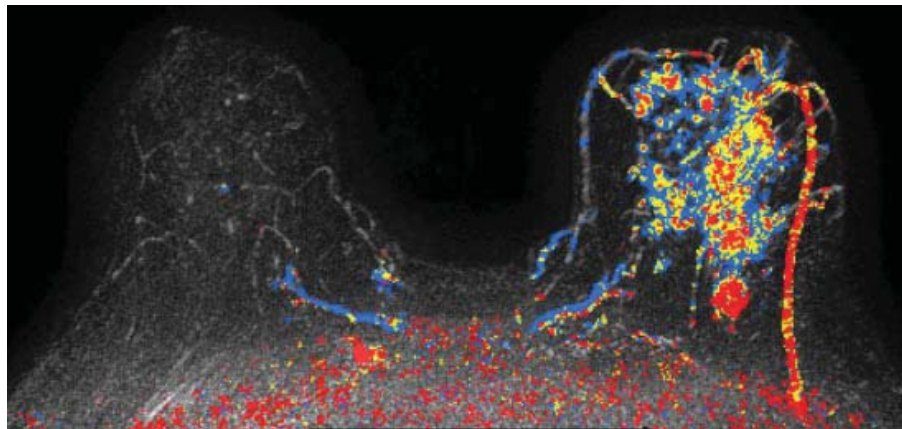
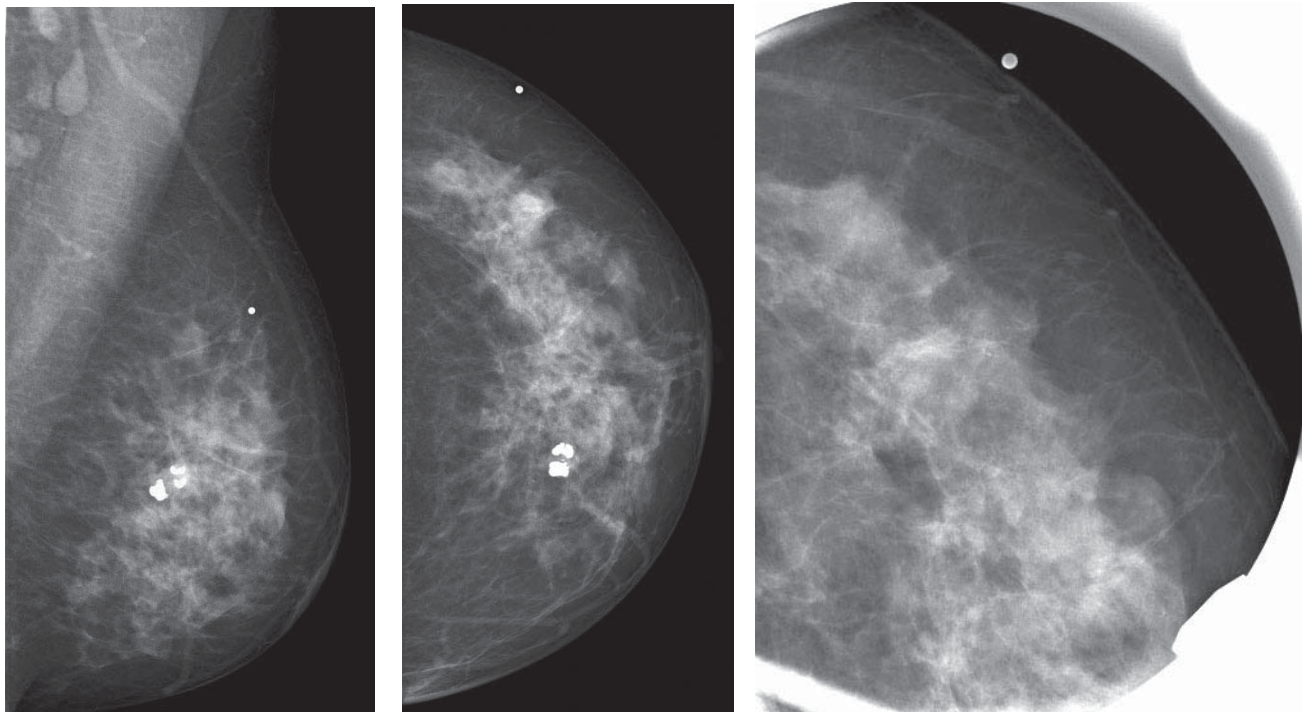
9:30 - 10:45 **GROUP 1:** DIDACTIC LECTURE SERIES COVERING THE FOLLOWING TOPICS:

DISCUSSION OF COMPLEX CASES - Faculty-audience interaction

11:00 - 12:00 **GROUPS 1& 2:** DISCUSSION OF THE SCREENING CASES OF *SESSION 4* AND
LECTURES OF THE MORNING SESSION

DISCUSSION
12:00 End of course

DISCUSSION OF COMPLEX CASES. THE VALUE OF USING THE MULTIMODALITY
APPROACH IN THE WORKUP OF COMPLEX CASES



Multifocal invasive and *in situ* carcinoma.

2011 *HELSINKI*
BREAST TEACHING COURSE
Multimodality Detection and
Diagnosis of Breast Diseases

László Tabár, M.D., F.A.C.R.(Hon)
Professor of Radiology, Course Director
Peter B. Dean, M.D., Professor of Radiology

For more information and
registration please contact:

For more information, registration and hotel booking please
contact: Mrs. Katariina Kortelainen

Phone: **+358 400231791**

e-mail: katariina.kortelainen@suomenrontgenhoitajaliitto.fi

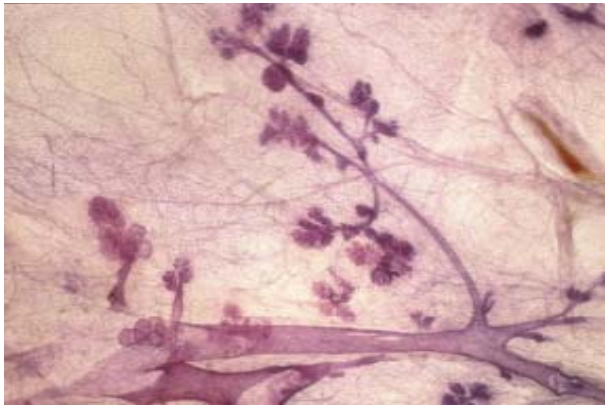
website: www.suomenrontgenhoitajaliitto.fi



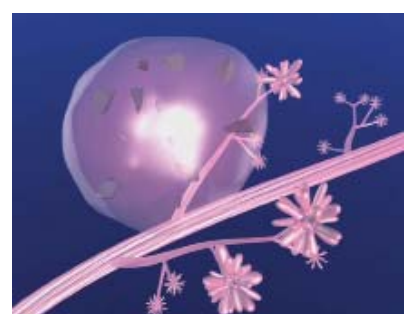
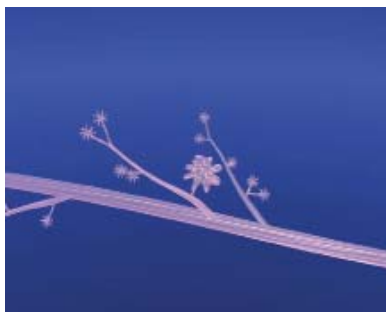
Hands-on training in screening

THE SCHEDULE IS SUBJECT TO CHANGE WITHOUT NOTICE AND
DOES NOT REPRESENT A COMMITMENT ON THE PART OF THE ORGANIZERS
ALL RIGHTS RESERVED INCLUDING THE RIGHT OF REPRODUCTION
IN WHOLE OR IN PART OF ANY FORM

COPYRIGHT ©



3-D histologic image of TDLUs



Computer simulation images of the development of Grade 2 *in situ* carcinoma within the TDLU. The lobule becomes gradually distended and deformed. Calcifications are formed within the necrotic debris and are seen on the mammogram as **crushed stone-like calcifications**.